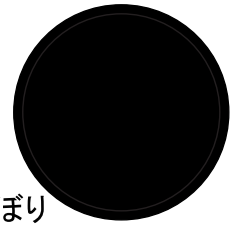




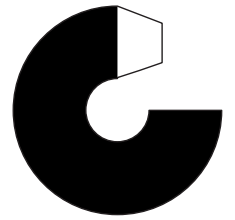
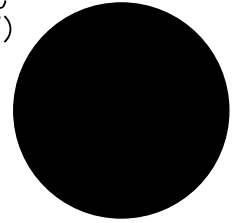
だいり  
お内裏さま



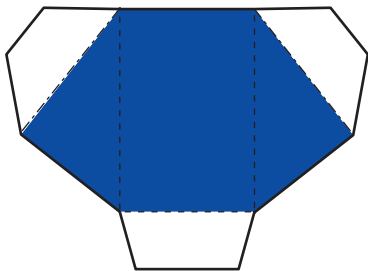
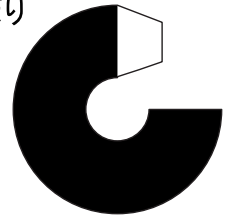
ひな  
お雛さま



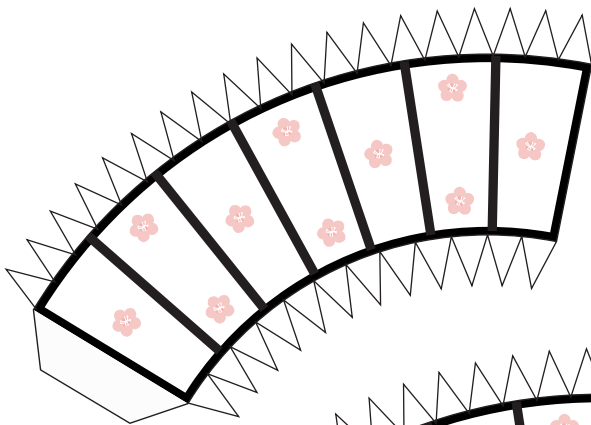
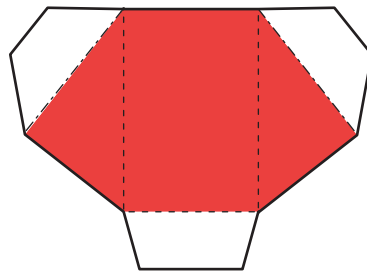
ぼんぼり  
うえめん  
(上面)



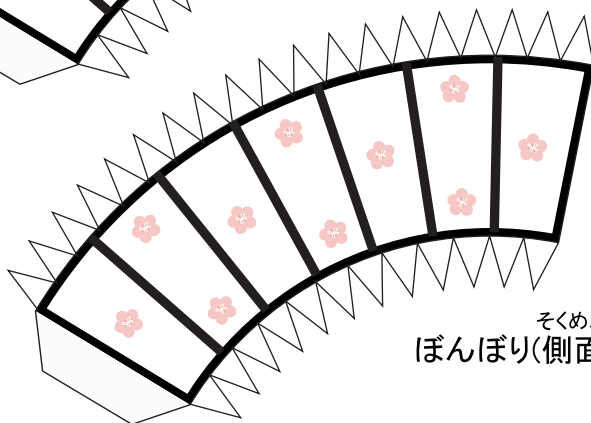
ぼんぼり  
だい  
(台)



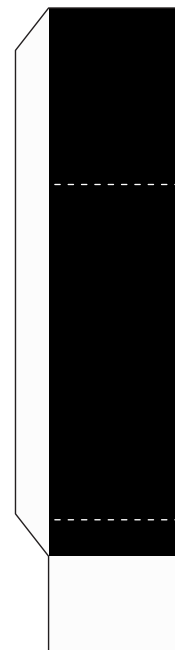
ささ  
支え



ぼんぼり  
しためん  
(下面)



そくめん  
ぼんぼり(側面)



ぼんぼり  
しちゆう  
(支柱)

